

FINANCIAL SUMMARY

For the Year Ended December 31, 2025

OVERVIEW

Income	Expenditure	End of Year Balance
£90,953.93	£97,540.59	£64,955.06

We budgeted a deficit of:

- £11,384

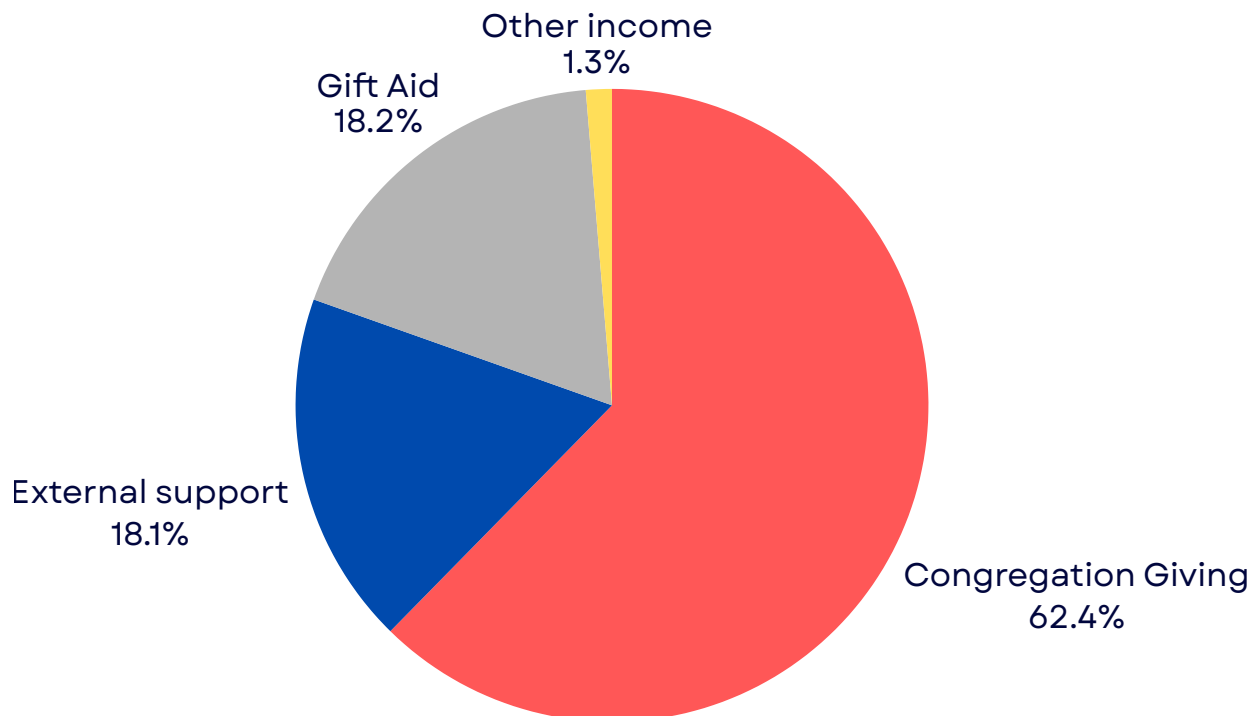
Our actual deficit was:

- £5,657

Our bank balance includes:

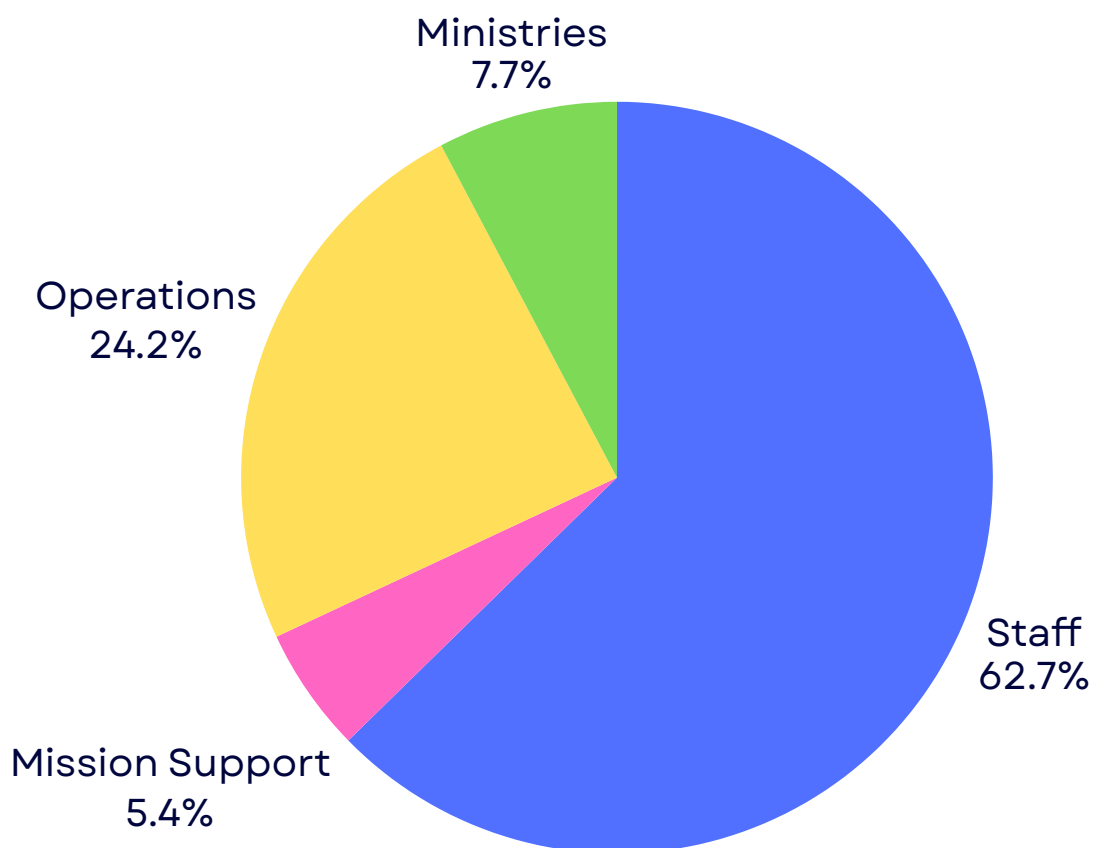
- Practical care fund: £500
- Weekend away fund: £50
- Church plant fund: £1078

INCOME BREAKDOWN



Note: Gift Aid was higher in 2025 due to claims made for previous years.

EXPENDITURE BREAKDOWN



Our split of spending within our ministries was:

- Sundays: £1601.03
- Midweek: £2893.47
 - including weekend away: £1631.36
- Outreach: £3410.53
 - including grant-supported events for the HK community: £2384.13

We also operated a separate Building Appeal budget through 2024–25 that is not covered in this financial summary.

Copies of the Budget 2026 and 2025 Financial Summary will be available at the AGM for those who would like to see our accounts in some extra detail.